

Tamping Rammer

MT series



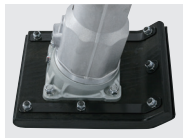
● Engine Cover



● VAS Handle



● Pre air-cleaner with Twin Cyclone



● Wear Resistant Foot



● MIKASA Original Throttle Lever



● Tacho Hour Meter



● Recoil Guard



● Bellows

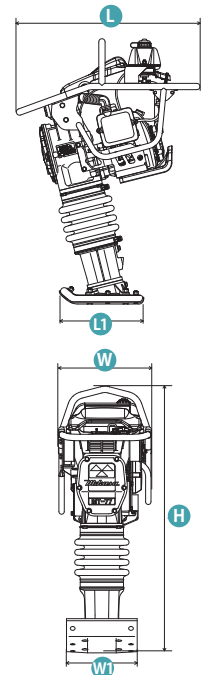
NEW
MT-77HRL (77kg)

W.285

NEW
MT-55H (62kg)

MT-66HL (72kg)
MT-66HRL (72kg)

Trench Rammer



W.265



W.285



W.150

MTR-40H (47kg)

MT Specifications

model	weight (kg)	dimensions (mm)	plate size (mm)	jumping stroke (mm)	impact force kN (kgf)	impact number per min.	fuel tank capacity (lits)	power source kW (PS)
MT-55H	62	H : 1,035 W : 370 L : 730	W1 : 265 L1 : 340	30-70	9.8 (1,000)	644-695	2.0	Honda GX100 gasoline max. output 2.1 (2.9)
MT-66HL	72	H : 1,070 W : 375 L : 740	W1 : 285 L1 : 340	50-80	12.7 (1,300)			
MT-77HRL					13.7 (1,400)			Honda GXR120 gasoline max. output 2.7 (3.6)

MTR Specifications

model	weight (kg)	dimensions (mm)	plate size (mm)	jumping stroke (mm)	impact force kN (kgf)	impact number per min.	fuel tank capacity (lits)	power source kW (PS)
MTR-40H	47	H : 1,110 W : 370 L : 620	W1 : 150 L1 : 270	40-55	5.4 (550)	644-695	2.0	Honda GX100 gasoline max. output 2.1 (2.9)